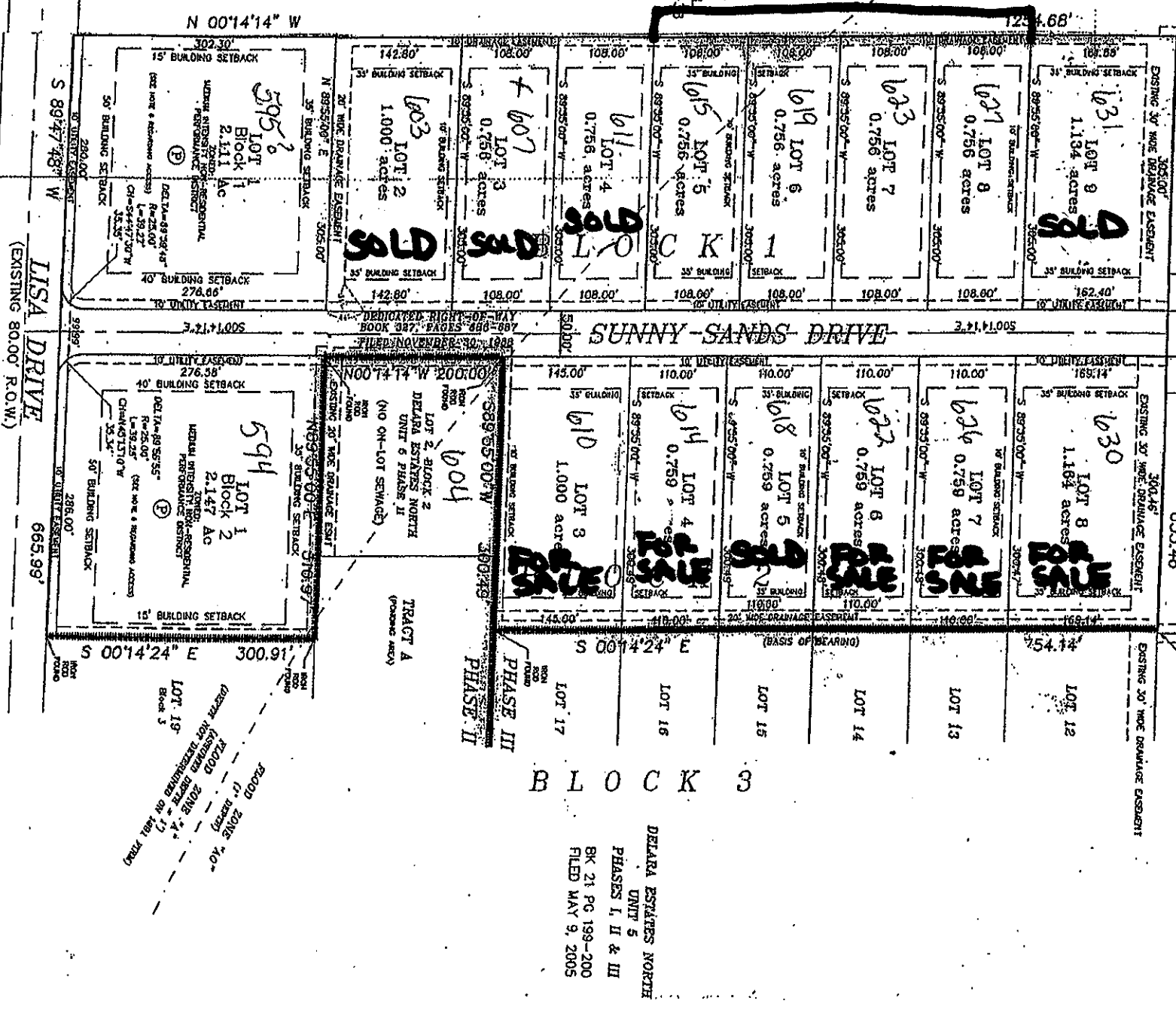


Available

DELAWARE ESTATES NORTH
UNIT I - REPLAT A
BK 15, PG 164-65
12-31-87

DELAWARE ESTATES NORTH
UNIT FOUR, PHASE III
BK 19 PG 709-10
8-30-01
P.O.B.
BLOCK 3
LOT 11



BLOCK 3

DELAWARE ESTATES NORTH
UNIT 5
PHASES I, II & III
BK 21 PG 199-200
FILED MAY 9, 2005

LISA DRIVE
(EXISTING 80.00' R.O.W.)
665.99'

N 00°14'14" W

S 00°14'24" E

RECORD ZONE '10'
(2' DEPTH)
RECORD ZONE '4'
(1' DEPTH)
RECORD ZONE '1'
(1' DEPTH)
NOT RECORDED ON 1801 (1998)

