

TUMBLEWEED ESTATES

LOCATED IN SECTION 16, T. 28 S., R. 5 E., N.M.P.M.
DOÑA ANA COUNTY, NEW MEXICO
MARCH 2008



SUBDIVISION CHARACTERISTICS

TOTAL AREA..... 8.352 AC
AREA WITHIN PUBLIC RIGHT-OF-WAY..... 0.718 AC
AREA WITHIN RESIDENTIAL LOTS..... 7.637 AC

SUBDIVISION ZONING: RESIDENTIAL PERFORMANCE DISTRICT
SURROUNDING ZONING: PERFORMANCE DISTRICT

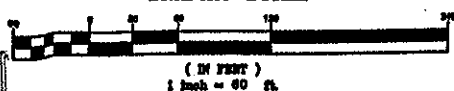
PROPERTY IS IN AN "X"
DESIGNATED ZONE AS SHOWN ON
THE FLOOD INSURANCE RATE
MAP, COMMUNITY PANEL
NO. 3601C0816 E, EFFECTIVE
SEPTEMBER 27, 1991.

LEGEND

- Ⓟ DESIGNATE ON-LOT PONDING REQUIRED. LOT THRU IS MANDATORY PONDING.
- BUILDING SETBACKS (SIDE SETBACK = 10')
- - - 12" UTILITY EMBANKMENTS

1/2" FOR NOT CHIPPED INPS MUST TO BE SET ON ALL CORNERS UNLESS OTHERWISE NOTED.

GRAPHIC SCALE



MARTINEZ
BY 44, PG 811
FILED 9/20/1991

CSO MAINTENANCE
BY 44, PG 139
FILED 3/14/1998

CSO MAINTENANCE
BY 48, PG 187
FILED 9/7/2003

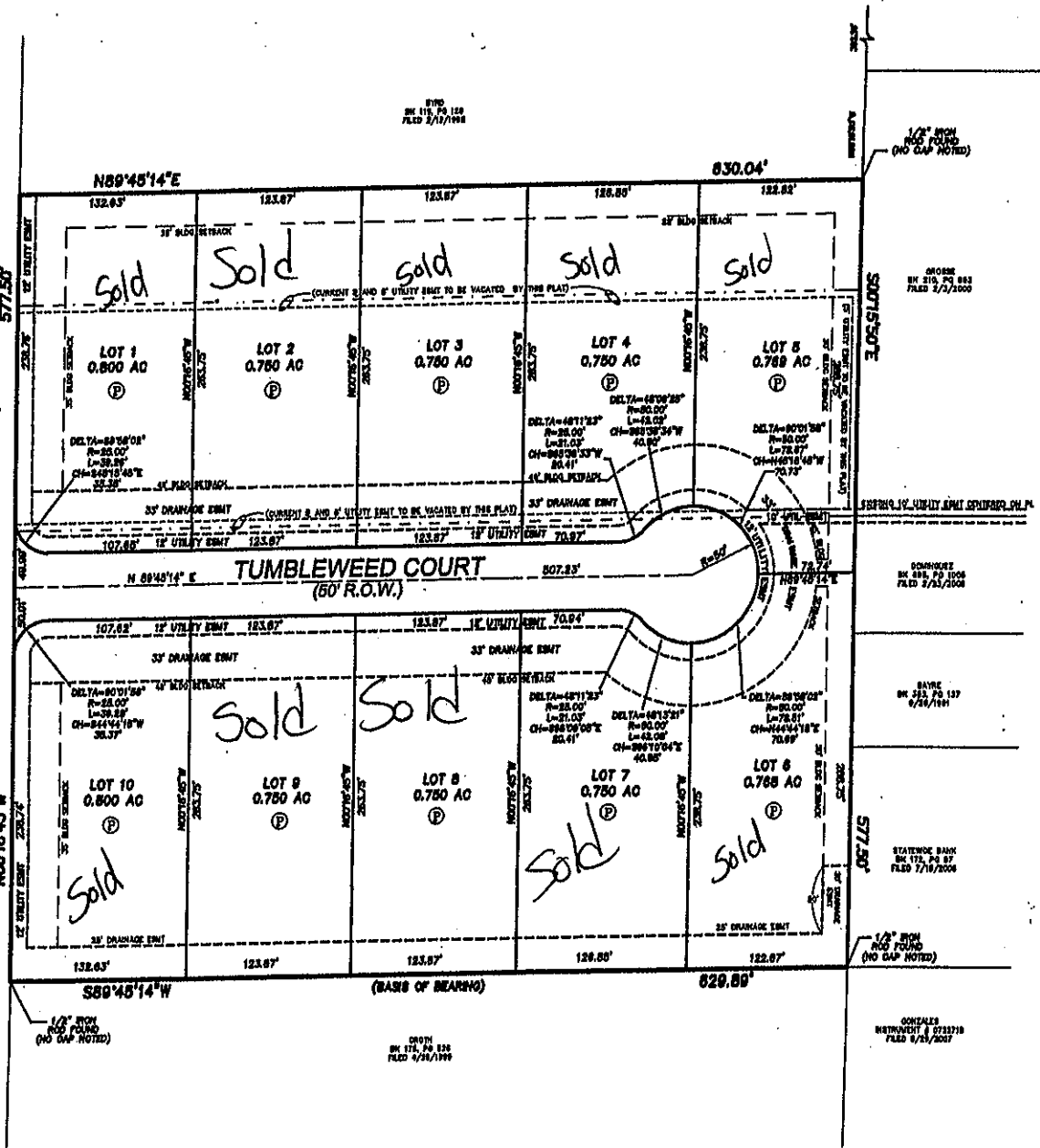
HSOORS
BY 102, PG 817
FILED 9/10/1997

REV AND BA
BY 372, PG 433
FILED 8/10/1993

ANCHONDO
BY 391, PG 877
FILED 3/11/1993

BOODY H&L LLO
BY 397, PG 1381
FILED 3/11/2003

TUMBLEWEED DRIVE
(EXISTING 60' ROAD & UTILITY R.O.W.)



TOTAL AREA = 8.352 AC.

scanlon white
1700 FOURTHS ROAD, SUITE C
LAS ALAMOS, NM 87031
(505) 835-3112